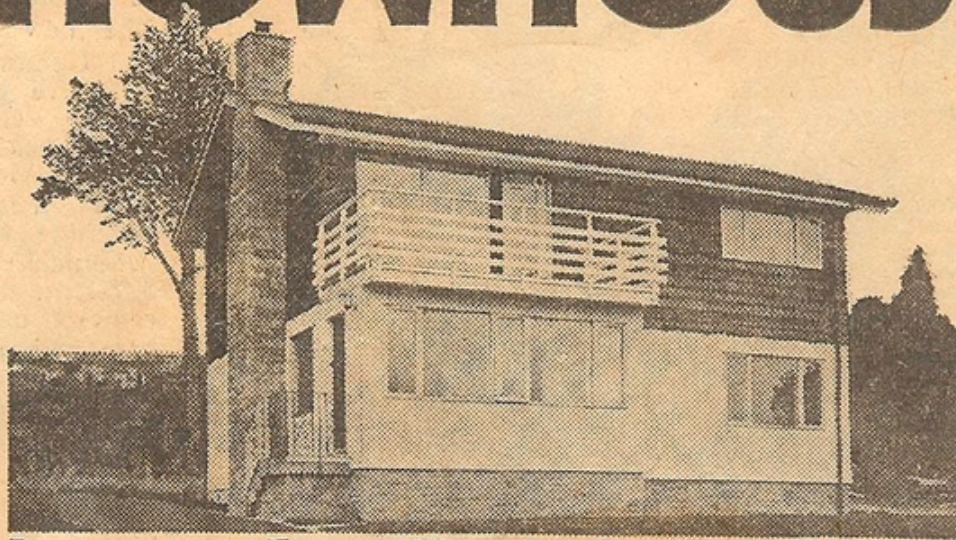


Open this weekend ~ new furnished  
**SHOWHOUSE**



**Barremman Estate Clynder Dunbartonshire**

Visit the Glenbrook Showhouse this September weekend at Clynder. This Showhouse has, apart from lounge, dining room, 4 bedrooms and kitchen—a study, two bathrooms and a large utility room, and is furnished to give you the true picture of this award winning design house. Built by Lochside Builders Ltd./Engineered Homes (G.B.) Ltd., on a delightful site overlooking Gareloch on the Firth of Clyde.

This new estate will contain 42 homes of six different house designs—built with great care and attention—all having emphasis on comfort and economy—every home has double glazing and oil fired central heating.

**PRICES FROM £7,400**



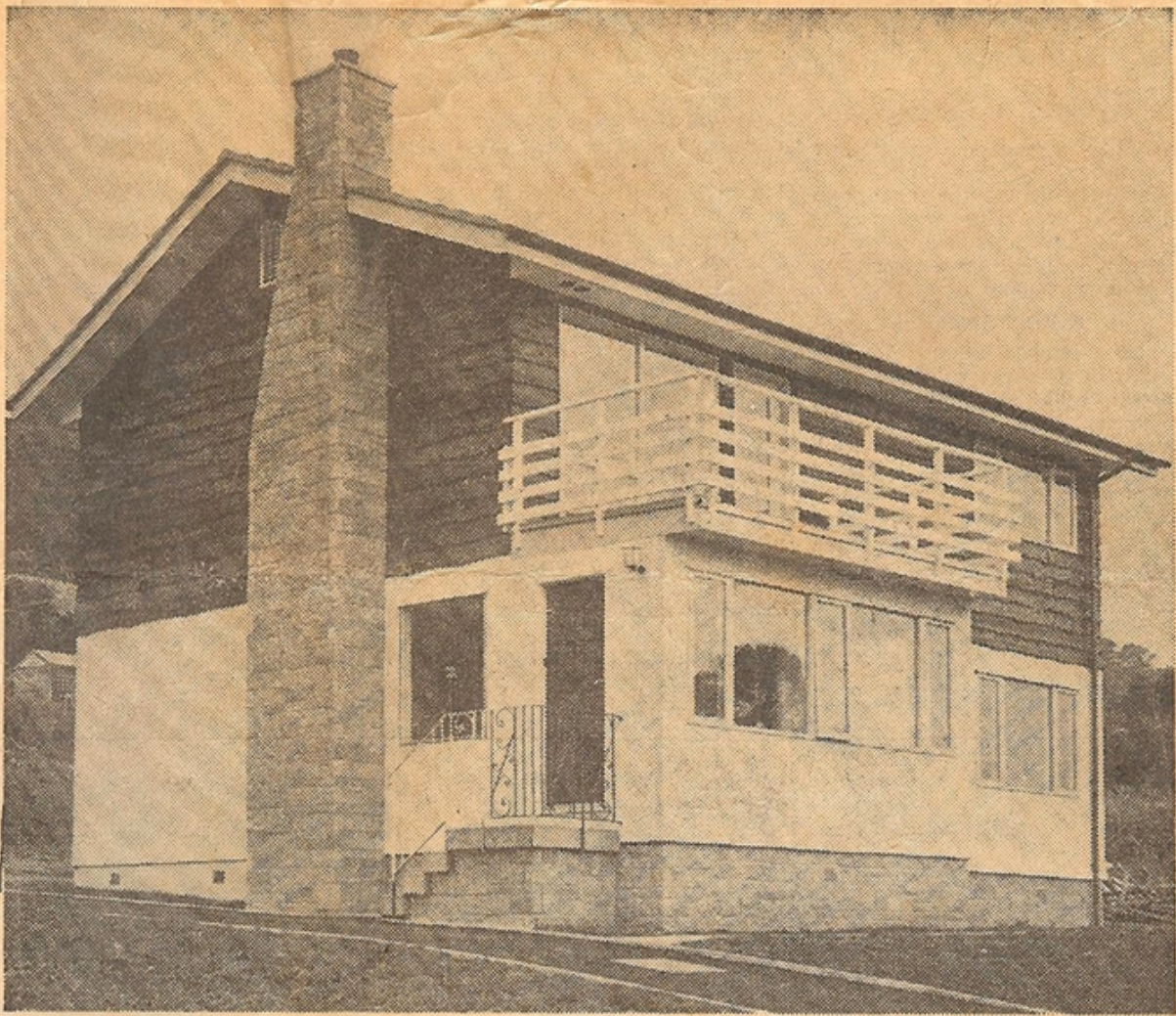
**Lochside Builders Ltd.**

SPY'S LANE RHU. Tel. RHU 392.

Sales enquiries to:— BERNARD PRESTON A.R.I.C.S. Chartered Surveyor

61 WEST PRINCES ST. HELENSBURGH. Tel. 4976. OR

24 Sandyford Place, Glasgow C.3. Tel. 041-221 8258.



The luxurious 7 apartment Glenbrook house on a choice site at Clynder is ideal for elegant country living.

"Glenbrook" type costing around £9680. The exterior is in brick, roughcast, and contemporary red cedar wood.

Included as standard (as in all houses on the estate) are central heating (storage oil-fired radiators), double glazing, retaining fences, levelled gardens, good cupboard accommodation, fitted furniture in all the bedrooms, and well-equipped kitchens and bathrooms. An allowance in the purchase price is made for the fireplace of the buyer's choice.

★ ★ ★

There are six rooms, and housewives will be particularly pleased with the well-designed, luxurious kitchen and the sensible amount of cupboard space throughout the house. Two bathrooms rule out family squabbles as to who gets in first thing in the morning!

Terrazzo steps lead to a side main door into a medium-sized family room and through to a capacious hall with a roomy

cloakroom-cupboard. On the ground floor, also, is a large utility room-laundry off which is the back door to the garden (double to cut out draughts).

A well-equipped bathroom with unusual tiling a special feature and a vanity sink unit and two bedrooms with fitted wardrobes complete the downstairs accommodation.

★ ★ ★

Sensibly wide stairs with wrought iron balustrades and hardwood handrails lead to a main lounge-dinette, a really spacious room with a large window at one end and French windows at the other leading to a veranda overlooking, within a stone's throw, the Gare Loch.

Off the main room is an unusual feature, an upstairs kitchen which, though on the small side, is more than adequately fitted with smart modern units. The kitchen door leads to a small square hall off which are the luxury main bathroom with its coloured suite,

shower compartment, and large strip mirror, the master bedroom (13ft. x 10ft. 8in.) which has the benefit of the glorious view, and a fair-sized second bedroom.

The sliding doors on all the fitted wardrobes and on the many roomy cupboards have been cleverly designed to save space.

To avoid similarity among the houses, some variations are allowed such as choice of colour schemes in kitchen, bathroom, and exterior finish.

★ ★ ★

The Glenbrook showhouse has no garage, although it is a simple matter to have one built. For car owners the Valleyview and Parkdale styles have carports included in the purchase price. There is space on every plot for a garage and the builders can quote prices for various types of garage.

The showhouse, fully furnished, will be open for viewing from to-day.